

Name: Rabbit polyclonal anti-MAPK8IP3 / JIP3 antibody
Product Data Sheet - ANTIBODY**Catalog:** TA315223

Components:	• Rabbit polyclonal anti-MAPK8IP3 / JIP3 antibody (TA315223)
Amount:	100ul
Immunogen:	The antiserum was produced against synthesized peptide derived from internal of human JIP3.
Host:	Rabbit
Isotype:	IgG
Species Reactivity:	Human, Mouse
Guaranteed Applications:	WB, IF
Suggested Dilutions:	WB: 1:500~1:3000, IF: 1:100~1:500, ELISA: 1:20000
Concentration:	1mg/ml
Buffer:	Phosphate buffered saline (without Mg ²⁺ and Ca ²⁺), pH 7.4, 150mM NaCl, 0.02% sodium azide and 50% glycerol.
Purification:	The antibody was affinity-purified from rabbit antiserum by affinity-chromatography using epitope-specific immunogen.
Storage Condition:	Shipped at -20C. Upon delivery store at -20C. Dilute in PBS (pH7.3) if necessary. Stable for 12 months from date of receipt. Avoid repeated freeze-thaws.

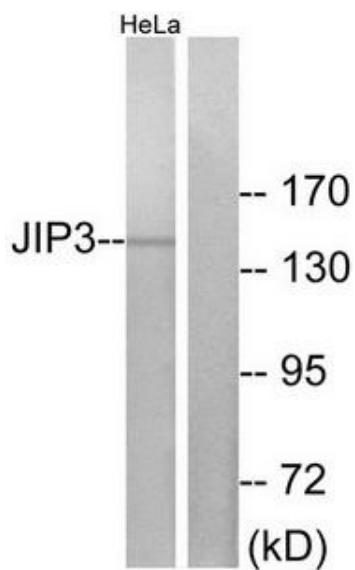
Target

Target Name:	Homo sapiens mitogen-activated protein kinase 8 interacting protein 3 (MAPK8IP3), transcript variant 2
Alternative Name:	JIP3; JSAP1; syd; SYD2
Database Link:	NP_001035529
Function:	

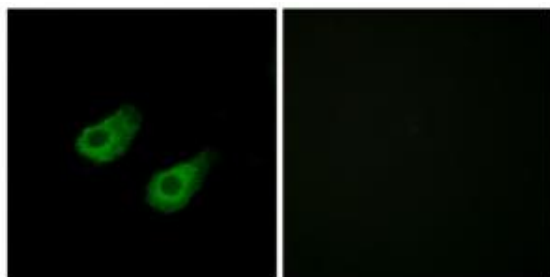
This product is to be used for laboratory only. Not for diagnostic or therapeutic use.

© 2014 OriGene Technologies, Inc. 9620 Medical Center Dr., Suite 200, Rockville, MD 20850

Validation Data



Western blot analysis of extracts from HeLa cells, using JIP3 antibody. The lane on the right is treated with the synthesized peptide.



Immunofluorescence analysis of HeLa cells, using JIP3 antibody. The picture on the right is treated with the synthesized peptide.

* More validation images may be available on our website: <http://www.origene.com/antibody/TA315223.aspx>

This product is to be used for laboratory only. Not for diagnostic or therapeutic use.

© 2014 OriGene Technologies, Inc. 9620 Medical Center Dr., Suite 200, Rockville, MD 20850
