

Name: Rabbit polyclonal anti-HUCE1 / RRP8 antibody
Product Data Sheet - ANTIBODY**Catalog: TA315242**

Components:	<ul style="list-style-type: none">• Rabbit polyclonal anti-HUCE1 / RRP8 antibody (TA315242)• 1 vial of 20ug myc-DDK tagged RRP8 HEK293T over-expression lysate lyophilized in RIPA buffer (LC414621). (Reconstitute into 20ul of 1x SDS sample buffer before loading; load 5ul per lane as WB control or as desired)
Amount:	100ul
Immunogen:	The antiserum was produced against synthesized peptide derived from internal of human HUCE1.
Host:	Rabbit
Isotype:	IgG
Species Reactivity:	Human
Guaranteed Applications:	WB
Suggested Dilutions:	WB: 1:500~1:3000, ELISA: 1:20000
Concentration:	1mg/ml
Buffer:	Phosphate buffered saline (without Mg ²⁺ and Ca ²⁺), pH 7.4, 150mM NaCl, 0.02% sodium azide and 50% glycerol.
Purification:	The antibody was affinity-purified from rabbit antiserum by affinity-chromatography using epitope-specific immunogen.
Storage Condition:	Shipped at -20C. Upon delivery store at -20C. Dilute in PBS (pH7.3) if necessary. Stable for 12 months from date of receipt. Avoid repeated freeze-thaws.

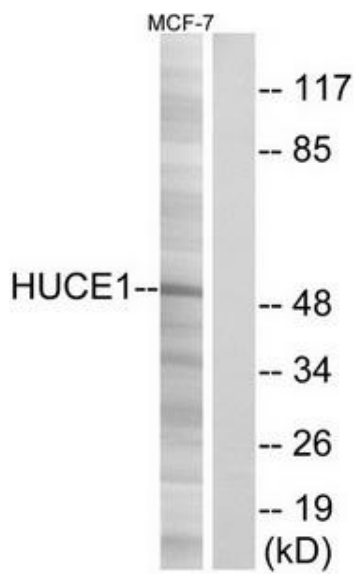
Target

Target Name:	Homo sapiens ribosomal RNA processing 8, methyltransferase, homolog (yeast) (RRP8)
Alternative Name:	KIAA0409; NML
Database Link:	NP_056139
Function:	

This product is to be used for laboratory only. Not for diagnostic or therapeutic use.

© 2014 OriGene Technologies, Inc. 9620 Medical Center Dr., Suite 200, Rockville, MD 20850

Validation Data



* More validation images may be available on our website: <http://www.origene.com/antibody/TA315242.aspx>