

**Name: Rabbit polyclonal anti-LPAR3 / EDG7 antibody**  
**Product Data Sheet - ANTIBODY****Catalog: TA315257**

<b>Components:</b>	<ul style="list-style-type: none"><li>• Rabbit polyclonal anti-LPAR3 / EDG7 antibody (TA315257)</li><li>• 1 vial of 20ug myc-DDK tagged LPAR3 HEK293T over-expression lysate lyophilized in RIPA buffer (LC415938). (Reconstitute into 20ul of 1x SDS sample buffer before loading; load 5ul per lane as WB control or as desired)</li></ul>
<b>Amount:</b>	100ul
<b>Immunogen:</b>	The antiserum was produced against synthesized peptide derived from C-terminal of human EDG7.
<b>Host:</b>	Rabbit
<b>Isotype:</b>	IgG
<b>Species Reactivity:</b>	Human
<b>Guaranteed Applications:</b>	WB, IF
<b>Suggested Dilutions:</b>	WB: 1:500~1:3000, IF: 1:100~1:500, ELISA: 1:40000
<b>Concentration:</b>	1mg/ml
<b>Buffer:</b>	Phosphate buffered saline (without Mg <sup>2+</sup> and Ca <sup>2+</sup> ), pH 7.4, 150mM NaCl, 0.02% sodium azide and 50% glycerol.
<b>Purification:</b>	The antibody was affinity-purified from rabbit antiserum by affinity-chromatography using epitope-specific immunogen.
<b>Storage Condition:</b>	Shipped at -20C. Upon delivery store at -20C. Dilute in PBS (pH7.3) if necessary. Stable for 12 months from date of receipt. Avoid repeated freeze-thaws.

## Target

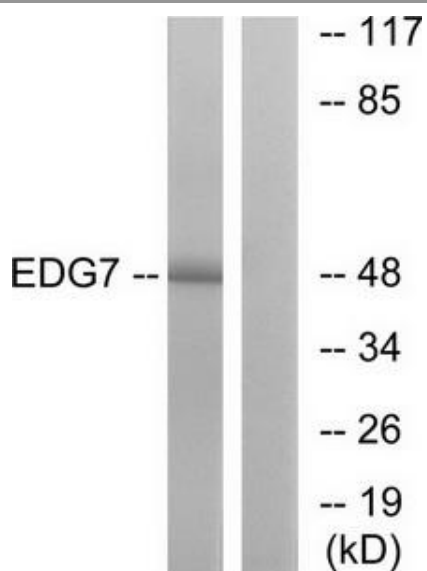
<b>Target Name:</b>	Homo sapiens lysophosphatidic acid receptor 3 (LPAR3)
<b>Alternative Name:</b>	Edg-7; EDG7; GPCR; HOFNH30; LP-A3; LPA3; RP4-678I3
<b>Database Link:</b>	NP_036284
<b>Function:</b>	

***This product is to be used for laboratory only. Not for diagnostic or therapeutic use.***

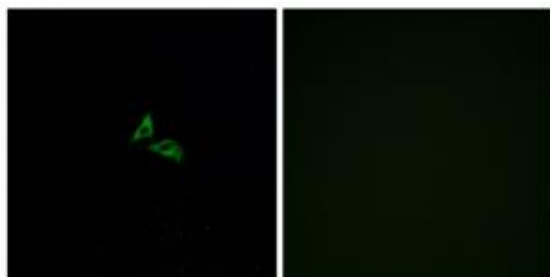
© 2014 OriGene Technologies, Inc. 9620 Medical Center Dr., Suite 200, Rockville, MD 20850

## Validation Data

---



Western blot analysis of extracts from Jurkat cells, using EDG7 antibody. The lane on the right is treated with the synthesized peptide.



Immunofluorescence analysis of A549 cells, using EDG7 antibody. The picture on the right is treated with the synthesized peptide.

\* More validation images may be available on our website: <http://www.origene.com/antibody/TA315257.aspx>

---

***This product is to be used for laboratory only. Not for diagnostic or therapeutic use.***

© 2014 OriGene Technologies, Inc. 9620 Medical Center Dr., Suite 200, Rockville, MD 20850

---