

Name: Rabbit polyclonal ATP1a1/Na+K+ ATPase1 (Ab-23) antibody
Product Data Sheet - ANTIBODY**Catalog: TA315281**

Components:	<ul style="list-style-type: none">• Rabbit polyclonal ATP1a1/Na+K+ ATPase1 (Ab-23) antibody (TA315281)• 1 vial of 20ug myc-DDK tagged Atp1a1 HEK293T over-expression lysate lyophilized in RIPA buffer (LC424561). (Reconstitute into 20ul of 1x SDS sample buffer before loading; load 5ul per lane as WB control or as desired)
Amount:	100ul
Immunogen:	The antiserum was produced against synthesized non-phosphopeptide derived from human ATP1a1/Na+K+ ATPase1 around the phosphorylation site of serine 23 (K-K-SP-K-K)
Host:	Rabbit
Isotype:	IgG
Species Reactivity:	Human, Rat
Guaranteed Applications:	WB, IF
Suggested Dilutions:	WB: 1:500~1:3000, IF: 1:100~1:500, ELISA: 1:40000
Concentration:	1mg/ml
Buffer:	Phosphate buffered saline (without Mg ²⁺ and Ca ²⁺), pH 7.4, 150mM NaCl, 0.02% sodium azide and 50% glycerol.
Purification:	The antibody was affinity-purified from rabbit antiserum by affinity-chromatography using epitope-specific immunogen.
Storage Condition:	Shipped at -20C. Upon delivery store at -20C. Dilute in PBS (pH7.3) if necessary. Stable for 12 months from date of receipt. Avoid repeated freeze-thaws.

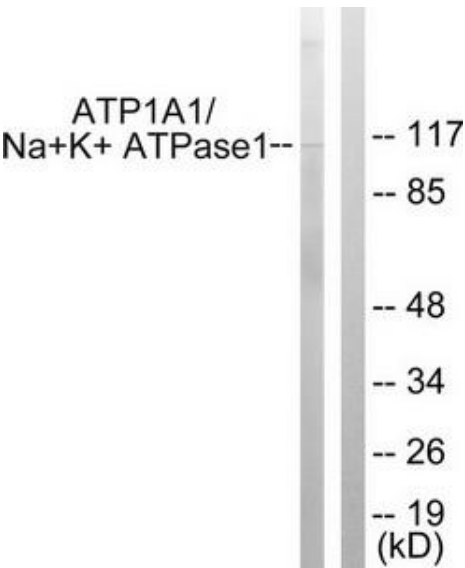
Target

Target Name:	Rattus norvegicus ATPase, Na+/K+ transporting, alpha 1 polypeptide (Atp1a1)
Alternative Name:	Nkaa1b
Database Link:	NP_036636
Function:	

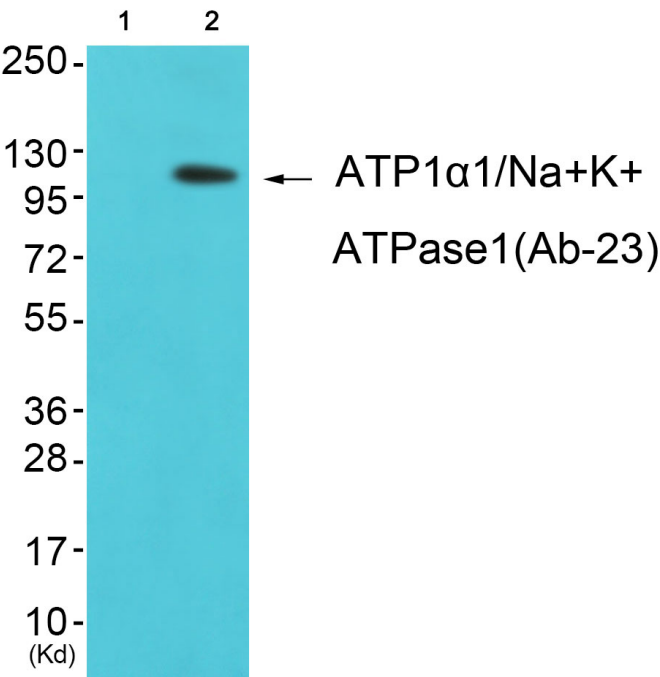
This product is to be used for laboratory only. Not for diagnostic or therapeutic use.

© 2014 OriGene Technologies, Inc. 9620 Medical Center Dr., Suite 200, Rockville, MD 20850

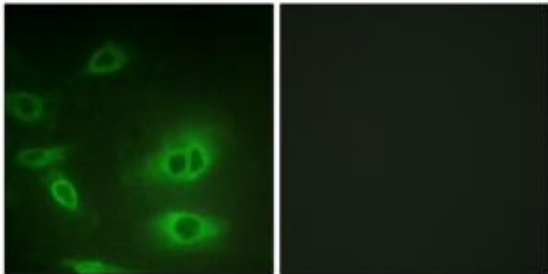
Validation Data



Western blot analysis of extracts from HeLa cells, using ATP1a1/Na+K+ ATPase1 (Ab-23) antibody. The lane on the right is treated with the synthesized peptide.



Western blot analysis of extracts from K562 cells (Lane 2), using ATP1a1/Na+K+ ATPase1 (Ab-23) Antibody. The lane on the left is treated with synthesized peptide.



* More validation images may be available on our website: <http://www.origene.com/antibody/TA315281.aspx>