

**Name: Rabbit polyclonal n-NOS(Ser852) antibody(Phospho-specific)**  
**Product Data Sheet - PHOSPHO****Catalog: TA315283**

<b>Components:</b>	• Rabbit polyclonal n-NOS(Ser852) antibody(Phospho-specific) (TA315283)
<b>Amount:</b>	100ul
<b>Immunogen:</b>	The antiserum was produced against synthesized phosphopeptide derived from human n-NOS around the phosphorylation site of serine 847 (F-N-SP-V-S).
<b>Host:</b>	Rabbit
<b>Isotype:</b>	IgG
<b>Species Reactivity:</b>	Human: Ser852, Mouse: Ser847, Rat: Ser847
<b>Guaranteed Applications:</b>	WB, IHC, IF
<b>Suggested Dilutions:</b>	WB: 1:500~1:3000, IHC: 1:50~1:100, IF: 1:100~1:500, ELISA: 1:1000
<b>Concentration:</b>	1mg/ml
<b>Buffer:</b>	Phosphate buffered saline (without Mg <sup>2+</sup> and Ca <sup>2+</sup> ), pH 7.4, 150mM NaCl, 0.02% sodium azide and 50% glycerol.
<b>Purification:</b>	The antibody was affinity-purified from rabbit antiserum by affinity-chromatography using epitope-specific immunogen.
<b>Storage Condition:</b>	Shipped at -20C. Upon delivery store at -20C. Dilute in PBS (pH7.3) if necessary. Stable for 12 months from date of receipt. Avoid repeated freeze-thaws.

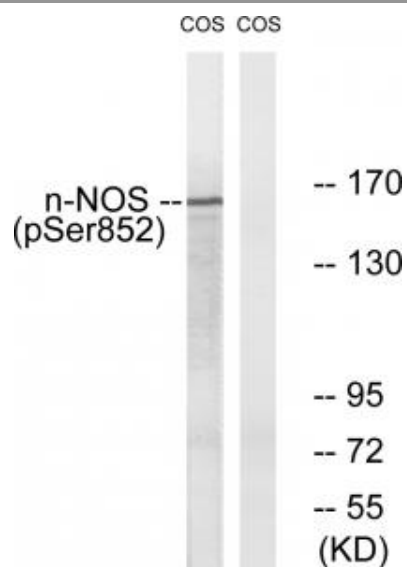
## Target

<b>Target Name:</b>	Rattus norvegicus nitric oxide synthase 1, neuronal (Nos1)
<b>Alternative Name:</b>	bNOS
<b>Database Link:</b>	NP_434686
<b>Function:</b>	

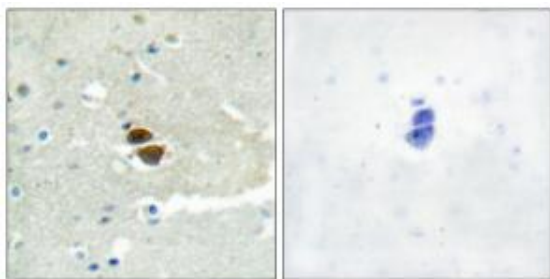
***This product is to be used for laboratory only. Not for diagnostic or therapeutic use.***

© 2014 OriGene Technologies, Inc. 9620 Medical Center Dr., Suite 200, Rockville, MD 20850

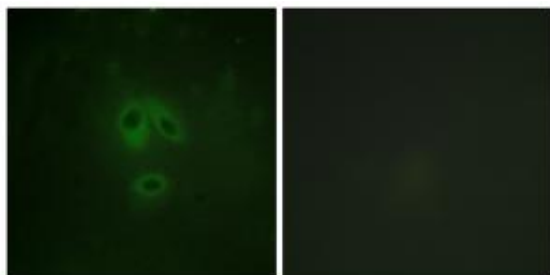
## Validation Data



Western blot analysis of extracts from COS7 cells, using n-NOS (Phospho-Ser852) antibody. The lane on the right is treated with the synthesized peptide.



Immunohistochemistry analysis of paraffin-embedded human brain tissue, using n-NOS (Phospho-Ser852) antibody. The picture on the right is treated with the synthesized peptide.



Immunofluorescence analysis of HeLa cells, using n-NOS (Phospho-Ser852) antibody. The picture on the right is treated with the synthesized peptide.

\* More validation images may be available on our website: <http://www.origene.com/antibody/TA315283.aspx>

***This product is to be used for laboratory only. Not for diagnostic or therapeutic use.***

© 2014 OriGene Technologies, Inc. 9620 Medical Center Dr., Suite 200, Rockville, MD 20850