

**Name: Rabbit polyclonal anti-GTPBP5 antibody**  
**Product Data Sheet - ANTIBODY****Catalog: TA315313**

<b>Components:</b>	• Rabbit polyclonal anti-GTPBP5 antibody (TA315313)
<b>Amount:</b>	100ul
<b>Immunogen:</b>	The antiserum was produced against synthesized peptide derived from internal of human GTPBP5.
<b>Host:</b>	Rabbit
<b>Isotype:</b>	IgG
<b>Species Reactivity:</b>	Human, Mouse, Rat
<b>Guaranteed Applications:</b>	IHC
<b>Suggested Dilutions:</b>	IHC: 1:50~1:100, ELISA: 1:1000
<b>Concentration:</b>	1mg/ml
<b>Buffer:</b>	Phosphate buffered saline (without Mg <sup>2+</sup> and Ca <sup>2+</sup> ), pH 7.4, 150mM NaCl, 0.02% sodium azide and 50% glycerol.
<b>Purification:</b>	The antibody was affinity-purified from rabbit antiserum by affinity-chromatography using epitope-specific immunogen.
<b>Storage Condition:</b>	Shipped at -20C. Upon delivery store at -20C. Dilute in PBS (pH7.3) if necessary. Stable for 12 months from date of receipt. Avoid repeated freeze-thaws.

## Target

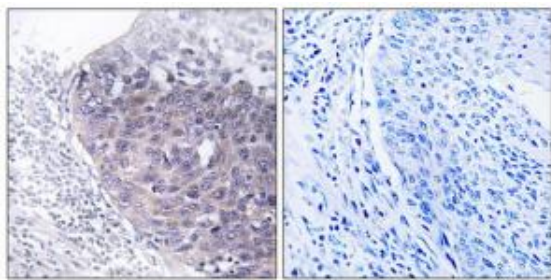
<b>Target Name:</b>	Homo sapiens mitochondrial ribosome-associated GTPase 2 (MTG2)
<b>Alternative Name:</b>	dJ1005F21.2; GTPBP5; ObgH1
<b>Database Link:</b>	NP_056481
<b>Function:</b>	

***This product is to be used for laboratory only. Not for diagnostic or therapeutic use.***

© 2014 OriGene Technologies, Inc. 9620 Medical Center Dr., Suite 200, Rockville, MD 20850

## Validation Data

---



Immunohistochemistry analysis of paraffin-embedded human cervix carcinoma tissue using GTPBP5 antibody. The picture on the right is treated with the synthesized peptide.

\* More validation images may be available on our website: <http://www.origene.com/antibody/TA315313.aspx>

---

***This product is to be used for laboratory only. Not for diagnostic or therapeutic use.***

© 2014 OriGene Technologies, Inc. 9620 Medical Center Dr., Suite 200, Rockville, MD 20850

---