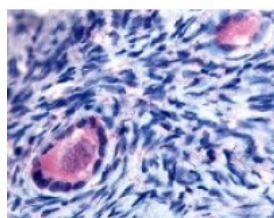




TMEM5 Antibody

CATALOG NUMBER: 48-202



Immunohistochemistry staining of TMEM5
in ovary, oocytes tissue using TMEM5
Antibody.

Specifications

SPECIES REACTIVITY:	Gibbon, Human
TESTED APPLICATIONS:	IHC
APPLICATIONS:	TMEM5 antibody can be used in ELISA, Western Blot, immunohistochemistry starting at 10 ug/mL, and immunofluorescence starting at 10 ug/mL.
USER NOTE:	Optimal dilutions for each application to be determined by the researcher.
SPECIFICITY:	BLAST analysis of the peptide immunogen showed no homology with other human proteins.
IMMUNOGEN:	TMEM5 antibody was raised against a peptide located near the Extracellular domain of TMEM5 (Human).
HOST SPECIES:	Rabbit

Properties

PURIFICATION:	Immunoaffinity Chromatography
PHYSICAL STATE:	Liquid
BUFFER:	PBS, 0.1% sodium azide.
STORAGE CONDITIONS:	TMEM5 antibody should be stored long term (months) at -80 °C and short term (days) at 4 °C. As with all antibodies avoid freeze/thaw cycles.
CLONALITY:	Polyclonal
CONJUGATE:	Unconjugated

Additional Info

ALTERNATE NAMES:	TMEM5, HP10481, Transmembrane protein 5
ACCESSION NO.:	Q9Y2B1
PROTEIN GI NO.:	50401708
OFFICIAL SYMBOL:	TMEM5
GENE ID:	10329

Background

