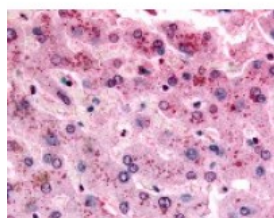




GPR153 Antibody

CATALOG NUMBER: 48-208



Immunohistochemistry staining of
GPR153 in liver tissue using GPR153
Antibody.

Specifications

SPECIES REACTIVITY:	Human, Monkey
TESTED APPLICATIONS:	ELISA, IHC
APPLICATIONS:	GPR153 antibody can be used in ELISA, immunohistochemistry, and immunofluorescence starting at 40 ug/mL.
USER NOTE:	Optimal dilutions for each application to be determined by the researcher.
SPECIFICITY:	BLAST analysis of the peptide immunogen showed no homology with other human proteins, except PCDHGA2 (56%), PCDHGA4 (50%).
IMMUNOGEN:	GPR153 antibody was raised against a peptide located in the C-Terminal cytoplasmic domain of GPR153 (Human).
HOST SPECIES:	Rabbit

Properties

PURIFICATION:	Immunoaffinity Chromatography
PHYSICAL STATE:	Liquid
BUFFER:	PBS, 0.1% sodium azide.
STORAGE CONDITIONS:	GPR153 antibody should be stored long term (months) at -80 °C and short term (days) at 4 °C. As with all antibodies avoid freeze/thaw cycles.
CLONALITY:	Polyclonal
CONJUGATE:	Unconjugated

Additional Info

ALTERNATE NAMES:	GPR153, PGR1, G protein-coupled receptor 153
ACCESSION NO.:	Q6NV75
PROTEIN GI NO.:	81170632
OFFICIAL SYMBOL:	GPR153
GENE ID:	387509

Background

BACKGROUND: GPR153 is an Orphan-U GPCR with an unknown ligand.

FOR RESEARCH USE ONLY

December 13, 2016