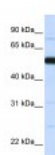




THUMPD2 Antibody

CATALOG NUMBER: 26-363



Antibody used in WB on Human Placenta
at 0.2-1 ug/ml.

Specifications

SPECIES REACTIVITY:	Human
TESTED APPLICATIONS:	ELISA, WB
APPLICATIONS:	THUMPD2 antibody can be used for detection of THUMPD2 by ELISA at 1:312500. THUMPD2 antibody can be used for detection of THUMPD2 by western blot at 1 ug/mL, and HRP conjugated secondary antibody should be diluted 1:50,000 - 100,000.
USER NOTE:	Optimal dilutions for each application to be determined by the researcher.
POSITIVE CONTROL:	1) Cat. No. 1309 - Human Placenta Lysate
PREDICTED MOLECULAR WEIGHT:	53 kDa
IMMUNOGEN:	Antibody produced in rabbits immunized with a synthetic peptide corresponding a region of human THUMPD2.
HOST SPECIES:	Rabbit

Properties

PURIFICATION:	Antibody is purified by peptide affinity chromatography method.
PHYSICAL STATE:	Lyophilized
BUFFER:	Antibody is lyophilized in PBS buffer with 2% sucrose. Add 50 uL of distilled water. Final antibody concentration is 1 mg/mL.
CONCENTRATION:	1 mg/ml
STORAGE CONDITIONS:	For short periods of storage (days) store at 4°C. For longer periods of storage, store THUMPD2 antibody at -20°C. As with any antibody avoid repeat freeze-thaw cycles.
CLONALITY:	Polyclonal
CONJUGATE:	Unconjugated

Additional Info

ALTERNATE NAMES:	THUMPD2, C2orf8, MGC2454
ACCESSION NO.:	NP_079540
PROTEIN GI NO.:	254553431

OFFICIAL SYMBOL: THUMPD2

GENE ID: 80745

Background

BACKGROUND: THUMPD2 belongs to the methyltransferase superfamily. It contains 1 THUMP domain. The function of the THUMPD2 protein remains unknown.

REFERENCES: 1) Zhang, Y., Cytogenet. Cell Genet. 95 (3-4), 146-152 (2001).

FOR RESEARCH USE ONLY

December 12, 2016