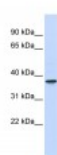




THOC6 Antibody

CATALOG NUMBER: 26-306



Antibody used in WB on Human Pancreas
at 0.2-1 ug/ml.

Specifications

SPECIES REACTIVITY:	Human, Mouse, Rat
TESTED APPLICATIONS:	ELISA, WB
APPLICATIONS:	THOC6 antibody can be used for detection of THOC6 by ELISA at 1:62500. THOC6 antibody can be used for detection of THOC6 by western blot at 1 ug/mL, and HRP conjugated secondary antibody should be diluted 1:50,000 - 100,000.
USER NOTE:	Optimal dilutions for each application to be determined by the researcher.
POSITIVE CONTROL:	1) Fetal Pancreas Lysate
PREDICTED MOLECULAR WEIGHT:	37 kDa
IMMUNOGEN:	Antibody produced in rabbits immunized with a synthetic peptide corresponding a region of human THOC6.
HOST SPECIES:	Rabbit

Properties

PURIFICATION:	Antibody is purified by peptide affinity chromatography method.
PHYSICAL STATE:	Lyophilized
BUFFER:	Antibody is lyophilized in PBS buffer with 2% sucrose. Add 50 uL of distilled water. Final antibody concentration is 1 mg/mL.
CONCENTRATION:	1 mg/ml
STORAGE CONDITIONS:	For short periods of storage (days) store at 4°C. For longer periods of storage, store THOC6 antibody at -20°C. As with any antibody avoid repeat freeze-thaw cycles.
CLONALITY:	Polyclonal
CONJUGATE:	Unconjugated

Additional Info

ALTERNATE NAMES:	THOC6, MGC2655, WDR58, BBIS, fSAP35
ACCESSION NO.:	NP_077315
PROTEIN GI NO.:	31543164

OFFICIAL SYMBOL: THOC6

GENE ID: 79228

Background

BACKGROUND: THOC6 belongs to the WD repeat THOC6 family. It contains 7 WD repeats. The function of the THOC6 protein remains unknown.

REFERENCES: 1) Gerhard, D.S., Genome Res. 14 (10B), 2121-2127 (2004).

FOR RESEARCH USE ONLY

December 12, 2016