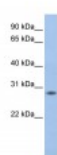




FKSG24 Antibody

CATALOG NUMBER: 26-307



Antibody used in WB on Human Muscle at
0.2-1 ug/ml.

Specifications

SPECIES REACTIVITY:	Human
TESTED APPLICATIONS:	ELISA, WB
APPLICATIONS:	FKSG24 antibody can be used for detection of FKSG24 by ELISA at 1:62500. FKSG24 antibody can be used for detection of FKSG24 by western blot at 1 ug/mL, and HRP conjugated secondary antibody should be diluted 1:50,000 - 100,000.
USER NOTE:	Optimal dilutions for each application to be determined by the researcher.
POSITIVE CONTROL:	1) Cat. No. XBL-10413 - Fetal Skeletal Muscle Tissue Lysate
PREDICTED MOLECULAR WEIGHT:	23 kDa
IMMUNOGEN:	Antibody produced in rabbits immunized with a synthetic peptide corresponding a region of human FKSG24.
HOST SPECIES:	Rabbit

Properties

PURIFICATION:	Antibody is purified by peptide affinity chromatography method.
PHYSICAL STATE:	Lyophilized
BUFFER:	Antibody is lyophilized in PBS buffer with 2% sucrose. Add 50 uL of distilled water. Final antibody concentration is 1 mg/mL.
CONCENTRATION:	1 mg/ml
STORAGE CONDITIONS:	For short periods of storage (days) store at 4°C. For longer periods of storage, store FKSG24 antibody at -20°C. As with any antibody avoid repeat freeze-thaw cycles.
CLONALITY:	Polyclonal
CONJUGATE:	Unconjugated

Additional Info

ALTERNATE NAMES:	FKSG24, MGC110861, MGC12972, FKSG24
ACCESSION NO.:	NP_116072
PROTEIN GI NO.:	116235468

OFFICIAL SYMBOL:	MPV17L2
GENE ID:	84769

Background

BACKGROUND:	FKSG24 is a multi-pass membrane proteinPotential. It belongs to the peroxisomal membrane protein PXMP2/4 family. The exact function of FKSG24 remains unknown.
REFERENCES:	1) Ota, T., (2004) Nat. Genet. 36 (1), 40-45.

FOR RESEARCH USE ONLY

December 12, 2016