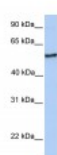




NUDCD1 Antibody

CATALOG NUMBER: 26-308



Antibody used in WB on Human Placenta
at 0.2-1 ug/ml.

Specifications

SPECIES REACTIVITY:	Human, Mouse, Rat
TESTED APPLICATIONS:	ELISA, WB
APPLICATIONS:	NUDCD1 antibody can be used for detection of NUDCD1 by ELISA at 1:312500. NUDCD1 antibody can be used for detection of NUDCD1 by western blot at 1 ug/mL, and HRP conjugated secondary antibody should be diluted 1:50,000 - 100,000.
USER NOTE:	Optimal dilutions for each application to be determined by the researcher.
POSITIVE CONTROL:	1) Cat. No. 1309 - Human Placenta Lysate
PREDICTED MOLECULAR WEIGHT:	67 kDa
IMMUNOGEN:	Antibody produced in rabbits immunized with a synthetic peptide corresponding a region of human NUDCD1.
HOST SPECIES:	Rabbit

Properties

PURIFICATION:	Antibody is purified by peptide affinity chromatography method.
PHYSICAL STATE:	Lyophilized
BUFFER:	Antibody is lyophilized in PBS buffer with 2% sucrose. Add 50 uL of distilled water. Final antibody concentration is 1 mg/mL.
CONCENTRATION:	1 mg/ml
STORAGE CONDITIONS:	For short periods of storage (days) store at 4°C. For longer periods of storage, store NUDCD1 antibody at -20°C. As with any antibody avoid repeat freeze-thaw cycles.
CLONALITY:	Polyclonal
CONJUGATE:	Unconjugated

Additional Info

ALTERNATE NAMES:	NUDCD1, CML66, FLJ14991, OVA66
ACCESSION NO.:	NP_116258
PROTEIN GI NO.:	189571677

OFFICIAL SYMBOL: NUDCD1

GENE ID: 84955

Background

BACKGROUND: NUDCD1 (CML66) contains 1 CS domain. It may play an oncogenic role in ways of favoring tumor cells proliferation, invasion and metastasis-associated with multiple pathways.

REFERENCES: 1) Yan, Y., (2004) J. Immunol. 172 (1), 651-660.

FOR RESEARCH USE ONLY

December 12, 2016