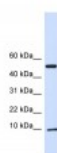




ATPIF1 Antibody

CATALOG NUMBER: 26-314



Antibody used in WB on Human 293T at
0.2-1 ug/ml.

Specifications

SPECIES REACTIVITY:	Human
TESTED APPLICATIONS:	ELISA, WB
APPLICATIONS:	ATPIF1 antibody can be used for detection of ATPIF1 by ELISA at 1:1562500. ATPIF1 antibody can be used for detection of ATPIF1 by western blot at 1 ug/mL, and HRP conjugated secondary antibody should be diluted 1:50,000 - 100,000.
USER NOTE:	Optimal dilutions for each application to be determined by the researcher.
POSITIVE CONTROL:	1) 293T Cell Lysate
PREDICTED MOLECULAR WEIGHT:	10 kDa
IMMUNOGEN:	Antibody produced in rabbits immunized with a synthetic peptide corresponding a region of human ATPIF1.
HOST SPECIES:	Rabbit

Properties

PURIFICATION:	Antibody is purified by peptide affinity chromatography method.
PHYSICAL STATE:	Lyophilized
BUFFER:	Antibody is lyophilized in PBS buffer with 2% sucrose. Add 50 uL of distilled water. Final antibody concentration is 1 mg/mL.
CONCENTRATION:	1 mg/ml
STORAGE CONDITIONS:	For short periods of storage (days) store at 4°C. For longer periods of storage, store ATPIF1 antibody at -20°C. As with any antibody avoid repeat freeze-thaw cycles.
CLONALITY:	Polyclonal
CONJUGATE:	Unconjugated

Additional Info

ALTERNATE NAMES:	ATPIF1, ATPI, ATPIP, IP, MGC1167, MGC8898
ACCESSION NO.:	NP_057395
PROTEIN GI NO.:	7705927

OFFICIAL SYMBOL: ATP1F1

GENE ID: 93974

Background

BACKGROUND: ATP1F1 is a mitochondrial ATPase inhibitor. It is thought to be a regulatory component of the ATP-synthesizing complex in the mitochondria. This gene encodes a mitochondrial ATPase inhibitor. Alternative splicing occurs at this locus and three transcript variants encoding distinct isoforms have been identified.

REFERENCES: 1) Contessi, S., (2007) J. Bioenerg. Biomembr. 39 (4), 291-300.

FOR RESEARCH USE ONLY

December 12, 2016