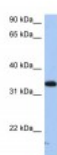




SULT6B1 Antibody

CATALOG NUMBER: 26-322



Antibody used in WB on Human HepG2 at
0.2-1 ug/ml.

Specifications

SPECIES REACTIVITY:	Human
TESTED APPLICATIONS:	ELISA, WB
APPLICATIONS:	SULT6B1 antibody can be used for detection of SULT6B1 by ELISA at 1:312500. SULT6B1 antibody can be used for detection of SULT6B1 by western blot at 1 ug/mL, and HRP conjugated secondary antibody should be diluted 1:50,000 - 100,000.
USER NOTE:	Optimal dilutions for each application to be determined by the researcher.
POSITIVE CONTROL:	1) Cat. No. 1211 - HepG2 Cell Lysate
PREDICTED MOLECULAR WEIGHT:	30 kDa
IMMUNOGEN:	Antibody produced in rabbits immunized with a synthetic peptide corresponding a region of human SULT6B1.
HOST SPECIES:	Rabbit

Properties

PURIFICATION:	Antibody is purified by peptide affinity chromatography method.
PHYSICAL STATE:	Lyophilized
BUFFER:	Antibody is lyophilized in PBS buffer with 2% sucrose. Add 50 uL of distilled water. Final antibody concentration is 1 mg/mL.
CONCENTRATION:	1 mg/ml
STORAGE CONDITIONS:	For short periods of storage (days) store at 4°C. For longer periods of storage, store SULT6B1 antibody at -20°C. As with any antibody avoid repeat freeze-thaw cycles.
CLONALITY:	Polyclonal
CONJUGATE:	Unconjugated

Additional Info

ALTERNATE NAMES:	SULT6B1,
ACCESSION NO.:	NP_001027549
PROTEIN GI NO.:	74024919

OFFICIAL SYMBOL: SULT6B1

GENE ID: 391365

Background

BACKGROUND: SULT6B1 belongs to the sulfotransferase 1 family. SULT6B1 may catalyze the sulfate conjugation of many drugs, xenobiotic compounds, hormones, and neurotransmitters.

REFERENCES: 1) Siebert, G., PLoS Biol. 5 (5), E97 (2007).

FOR RESEARCH USE ONLY

December 12, 2016