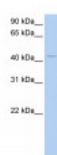




PECI Antibody

CATALOG NUMBER: 26-337



Antibody used in WB on Human HepG2 at
0.2-1 ug/ml.

Specifications

SPECIES REACTIVITY:	Human, Rat
TESTED APPLICATIONS:	ELISA, WB
APPLICATIONS:	PECI antibody can be used for detection of PECI by ELISA at 1:62500. PECI antibody can be used for detection of PECI by western blot at 1 ug/mL, and HRP conjugated secondary antibody should be diluted 1:50,000 - 100,000.
USER NOTE:	Optimal dilutions for each application to be determined by the researcher.
POSITIVE CONTROL:	1) Cat. No. 1211 - HepG2 Cell Lysate
PREDICTED MOLECULAR WEIGHT:	40 kDa
IMMUNOGEN:	Antibody produced in rabbits immunized with a synthetic peptide corresponding a region of human PECI.
HOST SPECIES:	Rabbit

Properties

PURIFICATION:	Antibody is purified by peptide affinity chromatography method.
PHYSICAL STATE:	Lyophilized
BUFFER:	Antibody is lyophilized in PBS buffer with 2% sucrose. Add 50 uL of distilled water. Final antibody concentration is 1 mg/mL.
CONCENTRATION:	1 mg/ml
STORAGE CONDITIONS:	For short periods of storage (days) store at 4°C. For longer periods of storage, store PECI antibody at -20°C. As with any antibody avoid repeat freeze-thaw cycles.
CLONALITY:	Polyclonal
CONJUGATE:	Unconjugated

Additional Info

ALTERNATE NAMES:	PECI, ACBD2, DRS1, HCA88, dJ1013A10.3, PECI, DRS-1
ACCESSION NO.:	NP_006108
PROTEIN GI NO.:	45643119

OFFICIAL SYMBOL:	EC12
GENE ID:	10455

Background

BACKGROUND:	PECI is an auxiliary enzyme that catalyzes an isomerization step required for the beta-oxidation of unsaturated fatty acids.PECI is an auxiliary enzyme that catalyzes an isomerization step required for the beta-oxidation of unsaturated fatty acids.
REFERENCES:	1) Feng, X., (2004) Blood 104 (8), 2425-2431.

FOR RESEARCH USE ONLY

December 12, 2016