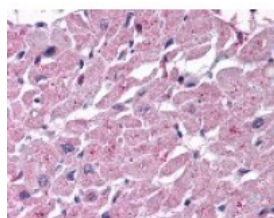




## CYSLTR2 Antibody

CATALOG NUMBER: 48-153



Immunohistochemistry staining of  
CYSLTR2 in heart tissue using CYSLTR2  
Antibody.

### Specifications

<b>SPECIES REACTIVITY:</b>	Gibbon, Horse, Human
<b>TESTED APPLICATIONS:</b>	ELISA, IHC
<b>APPLICATIONS:</b>	CYSLTR2 antibody can be used in immunohistochemistry starting at 13 ug/mL.
<b>USER NOTE:</b>	Optimal dilutions for each application to be determined by the researcher.
<b>SPECIFICITY:</b>	BLAST analysis of the peptide immunogen showed no homology with other human proteins, except GPR109B (59%), OXGR1 (59%), GPR81 (59%).
<b>IMMUNOGEN:</b>	CYSLTR2 antibody was raised against a peptide located in the 1st extracellular domain of CYSLTR2 (Human).
<b>HOST SPECIES:</b>	Rabbit

### Properties

<b>PURIFICATION:</b>	Immunoaffinity Chromatography
<b>PHYSICAL STATE:</b>	Liquid
<b>BUFFER:</b>	PBS, 0.1% sodium azide.
<b>STORAGE CONDITIONS:</b>	CYSLTR2 antibody should be stored long term (months) at -80 °C and short term (days) at 4 °C. As with all antibodies avoid freeze/thaw cycles.
<b>CLONALITY:</b>	Polyclonal
<b>CONJUGATE:</b>	Unconjugated

### Additional Info

<b>ALTERNATE NAMES:</b>	CYSLTR2, CysLT(2), CYSLT2, CYSLT2R, CysLT-2, HG57, HGPCR21, KPG_011, PSEC0146, HPN321
<b>ACCESSION NO.:</b>	Q9NS75
<b>PROTEIN GI NO.:</b>	20138034
<b>OFFICIAL SYMBOL:</b>	CYSLTR2
<b>GENE ID:</b>	57105

### Background

**BACKGROUND:**

Cysteinyl leukotriene receptor 2 (CysLT<sub>2</sub>) is a Chemoattractant Receptor that binds neutrophil chemoattractants such as cysteinyl leukotrienes. These ligands have potent proinflammatory activity and are implicated in many features of asthma including edema, bronchial constriction, and hyperreactivity (Bisgaard et al., 2000). Activation of cysteinyl leukotriene receptor 2 induces cell contraction and/or relaxation.

---

**FOR RESEARCH USE ONLY**

December 13, 2016