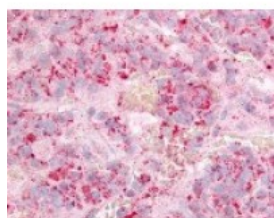




GPR12 Antibody

CATALOG NUMBER: 48-205



Immunohistochemistry staining of GPR12
in anterior pituitary tissue using GPR12
Antibody.

Specifications

| | |
|-----------------------------|--|
| SPECIES REACTIVITY: | Bovine, Dog, Gibbon, Gorilla, Hamster, Horse, Human, Monkey, Mouse, Pig, Rat |
| TESTED APPLICATIONS: | IHC |
| APPLICATIONS: | GPR12 antibody can be used in Western Blot, immunohistochemistry starting at 20 ug/mL, and flow cytometry. |
| USER NOTE: | Optimal dilutions for each application to be determined by the researcher. |
| SPECIFICITY: | BLAST analysis of the peptide immunogen showed no homology with other human proteins. |
| IMMUNOGEN: | GPR12 antibody was raised against a peptide located in the 1st extracellular domain of GPR12 (Human). |
| HOST SPECIES: | Rabbit |

Properties

| | |
|----------------------------|--|
| PURIFICATION: | Immunoaffinity Chromatography |
| PHYSICAL STATE: | Liquid |
| BUFFER: | PBS, 0.1% sodium azide. |
| STORAGE CONDITIONS: | GPR12 antibody should be stored long term (months) at -80 °C and short term (days) at 4 °C. As with all antibodies avoid freeze/thaw cycles. |
| CLONALITY: | Polyclonal |
| CONJUGATE: | Unconjugated |

Additional Info

| | |
|-------------------------|---|
| ALTERNATE NAMES: | GPR12, G protein-coupled receptor 12, G-protein coupled receptor 12, GPCR12, GPCR21 |
| ACCESSION NO.: | P47775 |
| PROTEIN GI NO.: | 1346168 |
| OFFICIAL SYMBOL: | GPR12 |
| GENE ID: | 2835 |

Background

| | |
|--------------------|--|
| BACKGROUND: | GPR12 has been identified as a constitutively active Lysophospholipid/Lysosphingolipid receptor. |
|--------------------|--|

