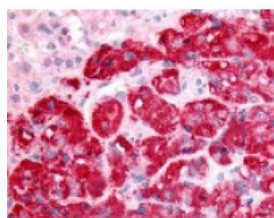




SPHK1 Antibody

CATALOG NUMBER: 48-207



Immunohistochemistry staining of SPHK1 in adrenal, pheochromocytoma tissue using SPHK1 Antibody.

Specifications

SPECIES REACTIVITY:	Gibbon, Human, Monkey
TESTED APPLICATIONS:	IHC
APPLICATIONS:	SPHK1 antibody can be used in immunohistochemistry starting at 40 ug/mL, and flow cytometry.
USER NOTE:	Optimal dilutions for each application to be determined by the researcher.
SPECIFICITY:	BLAST analysis of the peptide immunogen showed no homology with other human proteins.
IMMUNOGEN:	SPHK1 antibody was raised against a peptide located in the N-Terminal domain of SPHK1 (Human).
HOST SPECIES:	Rabbit

Properties

PURIFICATION:	Immunoaffinity Chromatography
PHYSICAL STATE:	Liquid
BUFFER:	PBS, 0.1% sodium azide.
STORAGE CONDITIONS:	SPHK1 antibody should be stored long term (months) at -80 °C and short term (days) at 4 °C. As with all antibodies avoid freeze/thaw cycles.
CLONALITY:	Polyclonal
CONJUGATE:	Unconjugated

Additional Info

ALTERNATE NAMES:	SPHK1, SK1, Sphingosine kinase 1, SPHK, SK 1, SPK 1, Sphingosine kinase type 1, SPK
ACCESSION NO.:	Q9NYA1
PROTEIN GI NO.:	17369329
OFFICIAL SYMBOL:	SPHK1
GENE ID:	8877

Background

BACKGROUND:	Sphingosine kinase (SPHK) phosphorylates sphingosine to form a bioactive lipid mediate, sphingosine 1-
--------------------	--

phosphate (S1P or SPP). S1P is a novel lipid messenger with both intracellular and extracellular functions. Intracellularly, it regulates proliferation and survival while extracellularly it is a ligand for EDG 1. Expression of SPHK1 and subsequent production of S1P promotes the G1-S transition, protects cells from apoptosis, stimulates migration and angiogenesis, and induces tumor formation in mice.

FOR RESEARCH USE ONLY

December 13, 2016