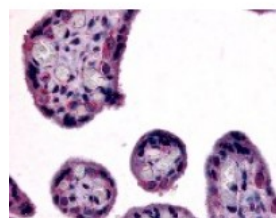




SLC7A5 Antibody

CATALOG NUMBER: 48-215



Immunohistochemistry staining of SLC7A5
in placenta, terminal villi tissue using
SLC7A5 Antibody.

Specifications

SPECIES REACTIVITY:	Gibbon, Human
TESTED APPLICATIONS:	IHC
APPLICATIONS:	SLC7A5 antibody can be used in ELISA, Western Blot, and immunohistochemistry starting at 5 ug/mL.
USER NOTE:	Optimal dilutions for each application to be determined by the researcher.
SPECIFICITY:	BLAST analysis of the peptide immunogen showed no homology with other human proteins.
IMMUNOGEN:	SLC7A5 antibody was raised against a peptide located near the internal domain of SLC7A5 (Human).
HOST SPECIES:	Rabbit

Properties

PURIFICATION:	Immunoaffinity Chromatography
PHYSICAL STATE:	Liquid
BUFFER:	PBS, 0.1% sodium azide.
STORAGE CONDITIONS:	SLC7A5 antibody should be stored long term (months) at -80 °C and short term (days) at 4 °C. As with all antibodies avoid freeze/thaw cycles.
CLONALITY:	Polyclonal
CONJUGATE:	Unconjugated

Additional Info

ALTERNATE NAMES:	SLC7A5, 4F2 LC, 4F2 light chain, 4F2LC, CD98, CD98 light chain, CD98LC, D16S469E, Integral membrane protein E16, Membrane protein E16, MPE16, LAT1, E16, HLA1, TA1
ACCESSION NO.:	Q01650
PROTEIN GI NO.:	12643412
OFFICIAL SYMBOL:	SLC7A5
GENE ID:	8140

Background

