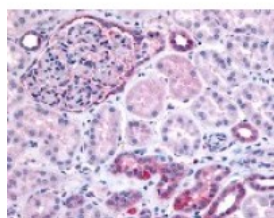




PIB5PA Antibody

CATALOG NUMBER: 48-217



Immunohistochemistry staining of PIB5PA
in glomerulus and renal tubular epithelium
in cortex tissue using PIB5PA Antibody.

Specifications

SPECIES REACTIVITY:	Gorilla, Human
TESTED APPLICATIONS:	IHC
APPLICATIONS:	PIB5PA antibody can be used in ELISA, Western Blot starting at 1:500 - 1:5000, and immunohistochemistry starting at 0.2 - 0.5 ug/mL.
USER NOTE:	Optimal dilutions for each application to be determined by the researcher.
SPECIFICITY:	BLAST analysis of the peptide immunogen showed no homology with other human proteins.
IMMUNOGEN:	PIB5PA antibody was raised against a peptide located in the N-Terminal region of PIB5PA (Human).
HOST SPECIES:	Rabbit

Properties

PURIFICATION:	Immunoaffinity Chromatography
PHYSICAL STATE:	Liquid
BUFFER:	PBS, 0.1% sodium azide.
STORAGE CONDITIONS:	PIB5PA antibody should be stored long term (months) at -80 °C and short term (days) at 4 °C. As with all antibodies avoid freeze/thaw cycles.
CLONALITY:	Polyclonal
CONJUGATE:	Unconjugated

Additional Info

ALTERNATE NAMES:	INPP5J, PIB5PA, INPP5, PIPP
ACCESSION NO.:	Q15735
PROTEIN GI NO.:	116242713
OFFICIAL SYMBOL:	INPP5J
GENE ID:	27124

Background

