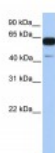




PWWP2A Antibody

CATALOG NUMBER: 26-366



Antibody used in WB on Human Brain at
0.2-1 ug/ml.

Specifications

SPECIES REACTIVITY:	Human, Rat
TESTED APPLICATIONS:	ELISA, WB
APPLICATIONS:	PWWP2A antibody can be used for detection of PWWP2A by ELISA at 1:1562500. PWWP2A antibody can be used for detection of PWWP2A by western blot at 1 ug/mL, and HRP conjugated secondary antibody should be diluted 1:50,000 - 100,000.
USER NOTE:	Optimal dilutions for each application to be determined by the researcher.
POSITIVE CONTROL:	1) Cat. No. XBL-10123 - Fetal Brain Tissue Lysate
PREDICTED MOLECULAR WEIGHT:	61 kDa
IMMUNOGEN:	Antibody produced in rabbits immunized with a synthetic peptide corresponding a region of human PWWP2A.
HOST SPECIES:	Rabbit

Properties

PURIFICATION:	Antibody is purified by peptide affinity chromatography method.
PHYSICAL STATE:	Lyophilized
BUFFER:	Antibody is lyophilized in PBS buffer with 2% sucrose. Add 50 uL of distilled water. Final antibody concentration is 1 mg/mL.
CONCENTRATION:	1 mg/ml
STORAGE CONDITIONS:	For short periods of storage (days) store at 4°C. For longer periods of storage, store PWWP2A antibody at -20°C. As with any antibody avoid repeat freeze-thaw cycles.
CLONALITY:	Polyclonal
CONJUGATE:	Unconjugated

Additional Info

ALTERNATE NAMES:	PWWP2A, KIAA1935, MGC132770, MST101
ACCESSION NO.:	NP_443159
PROTEIN GI NO.:	153791982

OFFICIAL SYMBOL: PWWP2A

GENE ID: 114825

Background

BACKGROUND: PWWP2A contains 1 PWWP domain. The exact function of PWWP2A remains unknown.

REFERENCES: 1) Ota, T., (2004) Nat. Genet. 36 (1), 40-45.

FOR RESEARCH USE ONLY

December 12, 2016