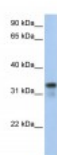




GLYATL2 Antibody

CATALOG NUMBER: 26-371



Antibody used in WB on Human 721_B at
0.2-1 ug/ml.

Specifications

SPECIES REACTIVITY:	Human
TESTED APPLICATIONS:	ELISA, WB
APPLICATIONS:	GLYATL2 antibody can be used for detection of GLYATL2 by ELISA at 1:62500. GLYATL2 antibody can be used for detection of GLYATL2 by western blot at 1 ug/mL, and HRP conjugated secondary antibody should be diluted 1:50,000 - 100,000.
USER NOTE:	Optimal dilutions for each application to be determined by the researcher.
POSITIVE CONTROL:	1) 721_B Cell Lysate
PREDICTED MOLECULAR WEIGHT:	34 kDa
IMMUNOGEN:	Antibody produced in rabbits immunized with a synthetic peptide corresponding a region of human GLYATL2.
HOST SPECIES:	Rabbit

Properties

PURIFICATION:	Antibody is purified by peptide affinity chromatography method.
PHYSICAL STATE:	Lyophilized
BUFFER:	Antibody is lyophilized in PBS buffer with 2% sucrose. Add 50 uL of distilled water. Final antibody concentration is 1 mg/mL.
CONCENTRATION:	1 mg/ml
STORAGE CONDITIONS:	For short periods of storage (days) store at 4°C. For longer periods of storage, store GLYATL2 antibody at -20°C. As with any antibody avoid repeat freeze-thaw cycles.
CLONALITY:	Polyclonal
CONJUGATE:	Unconjugated

Additional Info

ALTERNATE NAMES:	GLYATL2, BXMAS2-10, GATF-B, MGC24009
ACCESSION NO.:	NP_659453
PROTEIN GI NO.:	150010619

OFFICIAL SYMBOL: GLYATL2

GENE ID: 219970

Background

BACKGROUND: GLYATL2 belongs to the glycine N-acyltransferase family. GLYATL2 is a mitochondrial acyltransferase which transfers the acyl group to the N-terminus of glycine. It can conjugate a multitude of substrates to form a variety of N-acylglycines.

REFERENCES: 1) Gerhard, D.S., Genome Res. 14 (10B), 2121-2127 (2004).

FOR RESEARCH USE ONLY

December 12, 2016