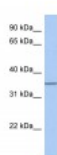




GLT6D1 Antibody

CATALOG NUMBER: 26-382



Antibody used in WB on Human Heart at
0.2-1 ug/ml.

Specifications

SPECIES REACTIVITY:	Human
TESTED APPLICATIONS:	ELISA, WB
APPLICATIONS:	GLT6D1 antibody can be used for detection of GLT6D1 by ELISA at 1:1562500. GLT6D1 antibody can be used for detection of GLT6D1 by western blot at 1 ug/mL, and HRP conjugated secondary antibody should be diluted 1:50,000 - 100,000.
USER NOTE:	Optimal dilutions for each application to be determined by the researcher.
POSITIVE CONTROL:	1) Cat. No. XBL-10407 - Fetal Heart Tissue Lysate
PREDICTED MOLECULAR WEIGHT:	32 kDa
IMMUNOGEN:	Antibody produced in rabbits immunized with a synthetic peptide corresponding a region of human GLT6D1.
HOST SPECIES:	Rabbit

Properties

PURIFICATION:	Antibody is purified by peptide affinity chromatography method.
PHYSICAL STATE:	Lyophilized
BUFFER:	Antibody is lyophilized in PBS buffer with 2% sucrose. Add 50 uL of distilled water. Final antibody concentration is 1 mg/mL.
CONCENTRATION:	1 mg/ml
STORAGE CONDITIONS:	For short periods of storage (days) store at 4°C. For longer periods of storage, store GLT6D1 antibody at -20°C. As with any antibody avoid repeat freeze-thaw cycles.
CLONALITY:	Polyclonal
CONJUGATE:	Unconjugated

Additional Info

ALTERNATE NAMES:	GLT6D1, GLTDC1, GT6M7
ACCESSION NO.:	NP_892019
PROTEIN GI NO.:	134288859

OFFICIAL SYMBOL: GLT6D1

GENE ID: 360203

Background

BACKGROUND: GLT6D1 is a single-pass type II membrane protein. It belongs to the glycosyltransferase 6 family. The exact function of GLT6D1 remains unknown.

FOR RESEARCH USE ONLY

December 12, 2016