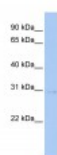


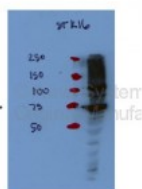


STK16 Antibody

CATALOG NUMBER: 26-300



Antibody used in WB on Human brain at 0.2-1 ug/ml.



Antibody used in WB on Human HEK293T at 1:1000.

Specifications

SPECIES REACTIVITY:	Human
TESTED APPLICATIONS:	ELISA, WB
APPLICATIONS:	STK16 antibody can be used for detection of STK16 by ELISA at 1:12500. STK16 antibody can be used for detection of STK16 by western blot at 1 ug/mL, and HRP conjugated secondary antibody should be diluted 1:50,000 - 100,000.
USER NOTE:	Optimal dilutions for each application to be determined by the researcher.
POSITIVE CONTROL:	1) Cat. No. XBL-10123 - Fetal Brain Tissue Lysate
PREDICTED MOLECULAR WEIGHT:	35 kDa
IMMUNOGEN:	Antibody produced in rabbits immunized with a synthetic peptide corresponding a region of human STK16.
HOST SPECIES:	Rabbit

Properties

PURIFICATION:	Antibody is purified by peptide affinity chromatography method.
PHYSICAL STATE:	Lyophilized
BUFFER:	Antibody is lyophilized in PBS buffer with 2% sucrose. Add 50 uL of distilled water. Final antibody concentration is 1 mg/mL.
CONCENTRATION:	1 mg/ml
STORAGE CONDITIONS:	For short periods of storage (days) store at 4°C. For longer periods of storage, store STK16 antibody at -20°C. As with any antibody avoid repeat freeze-thaw cycles.
CLONALITY:	Polyclonal
CONJUGATE:	Unconjugated

Additional Info

ALTERNATE NAMES:	STK16, FLJ39635, KRCT, MPSK, PKL12, TSF1
ACCESSION NO.:	NP_003682
PROTEIN GI NO.:	57165434

OFFICIAL SYMBOL: STK16

GENE ID: 8576

Background

BACKGROUND: STK16 is a protein kinase that acts on both serine and threonine residues.

REFERENCES: 1) Ewing, R.M., Mol. Syst. Biol. 3, 89 (2007).

FOR RESEARCH USE ONLY

December 12, 2016