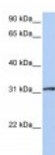




## DRG1 Antibody

CATALOG NUMBER: 26-302



Antibody used in WB on Human 721\_B at  
0.2-1 ug/ml.

### Specifications

|                                    |  |
|------------------------------------|--|
| <b>SPECIES REACTIVITY:</b>         | Human, Mouse, Rat  |
| <b>TESTED APPLICATIONS:</b>        | ELISA, WB  |
| <b>APPLICATIONS:</b>               | DRG1 antibody can be used for detection of DRG1 by ELISA at 1:62500. DRG1 antibody can be used for detection of DRG1 by western blot at 1 ug/mL, and HRP conjugated secondary antibody should be diluted 1:50,000 - 100,000. |
| <b>USER NOTE:</b>                  | Optimal dilutions for each application to be determined by the researcher.   |
| <b>POSITIVE CONTROL:</b>           | 1) 721_B Cell Lysate   |
| <b>PREDICTED MOLECULAR WEIGHT:</b> | 26 kDa   |
| <b>IMMUNOGEN:</b>                  | Antibody produced in rabbits immunized with a synthetic peptide corresponding a region of human DRG1.  |
| <b>HOST SPECIES:</b>               | Rabbit   |

### Properties

|                            |  |
|----------------------------|--|
| <b>PURIFICATION:</b>       | Antibody is purified by peptide affinity chromatography method.  |
| <b>PHYSICAL STATE:</b>     | Lyophilized  |
| <b>BUFFER:</b>             | Antibody is lyophilized in PBS buffer with 2% sucrose. Add 50 uL of distilled water. Final antibody concentration is 1 mg/mL.  |
| <b>CONCENTRATION:</b>      | 1 mg/ml  |
| <b>STORAGE CONDITIONS:</b> | For short periods of storage (days) store at 4°C. For longer periods of storage, store DRG1 antibody at -20°C. As with any antibody avoid repeat freeze-thaw cycles. |
| <b>CLONALITY:</b>          | Polyclonal   |
| <b>CONJUGATE:</b>          | Unconjugated   |

### Additional Info

|                         |                            |
|-------------------------|----------------------------|
| <b>ALTERNATE NAMES:</b> | DRG1, DKFZp434N1827, NEDD3 |
| <b>ACCESSION NO.:</b>   | EAW59974.1                 |
| <b>PROTEIN GI NO.:</b>  | 119580378                  |

**OFFICIAL SYMBOL:** DRG1

**GENE ID:** 4733

### Background

**BACKGROUND:** DRG1 belongs to the GTP1/OBG family. It may play a role in cell proliferation, differentiation and death.

**FOR RESEARCH USE ONLY**

December 12, 2016