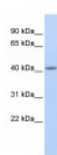




EPSTI1 Antibody

CATALOG NUMBER: 26-309



Antibody used in WB on Human MCF-7 at
0.2-1 ug/ml.

Specifications

SPECIES REACTIVITY:	Human
TESTED APPLICATIONS:	ELISA, WB
APPLICATIONS:	EPSTI1 antibody can be used for detection of EPSTI1 by ELISA at 1:62500. EPSTI1 antibody can be used for detection of EPSTI1 by western blot at 1 ug/mL, and HRP conjugated secondary antibody should be diluted 1:50,000 - 100,000.
USER NOTE:	Optimal dilutions for each application to be determined by the researcher.
POSITIVE CONTROL:	1) Cat. No. 1219 - MCF7 Cell Lysate
PREDICTED MOLECULAR WEIGHT:	47 kDa
IMMUNOGEN:	Antibody produced in rabbits immunized with a synthetic peptide corresponding a region of human EPSTI1.
HOST SPECIES:	Rabbit

Properties

PURIFICATION:	Antibody is purified by peptide affinity chromatography method.
PHYSICAL STATE:	Lyophilized
BUFFER:	Antibody is lyophilized in PBS buffer with 2% sucrose. Add 50 uL of distilled water. Final antibody concentration is 1 mg/mL.
CONCENTRATION:	1 mg/ml
STORAGE CONDITIONS:	For short periods of storage (days) store at 4°C. For longer periods of storage, store EPSTI1 antibody at -20°C. As with any antibody avoid repeat freeze-thaw cycles.
CLONALITY:	Polyclonal
CONJUGATE:	Unconjugated

Additional Info

ALTERNATE NAMES:	EPSTI1, BRESI1, MGC29634
ACCESSION NO.:	NP_001002264
PROTEIN GI NO.:	50428917

OFFICIAL SYMBOL: EPSTI1

GENE ID: 94240

Background

BACKGROUND: EPSTI1 was up-regulated in breast carcinomas. The exact function of EPSTI1 is not known.

REFERENCES: 1) Nielsen, H.L., (2002) Genomics 79 (5), 703-710.

FOR RESEARCH USE ONLY

December 12, 2016