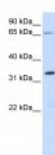




C19orf47 Antibody

CATALOG NUMBER: 26-315



Antibody used in WB on Human Muscle at
0.2-1 ug/ml.

Specifications

SPECIES REACTIVITY:	Human, Mouse, Rat
TESTED APPLICATIONS:	ELISA, WB
APPLICATIONS:	C19orf47 antibody can be used for detection of C19orf47 by ELISA at 1:1562500. C19orf47 antibody can be used for detection of C19orf47 by western blot at 1 ug/mL, and HRP conjugated secondary antibody should be diluted 1:50,000 - 100,000.
USER NOTE:	Optimal dilutions for each application to be determined by the researcher.
POSITIVE CONTROL:	1) Cat. No. XBL-10413 - Fetal Skeletal Muscle Tissue Lysate
PREDICTED MOLECULAR WEIGHT:	38 kDa
IMMUNOGEN:	Antibody produced in rabbits immunized with a synthetic peptide corresponding a region of human C19orf47.
HOST SPECIES:	Rabbit

Properties

PURIFICATION:	Antibody is purified by peptide affinity chromatography method.
PHYSICAL STATE:	Lyophilized
BUFFER:	Antibody is lyophilized in PBS buffer with 2% sucrose. Add 50 uL of distilled water. Final antibody concentration is 1 mg/mL.
CONCENTRATION:	1 mg/ml
STORAGE CONDITIONS:	For short periods of storage (days) store at 4°C. For longer periods of storage, store C19orf47 antibody at -20°C. As with any antibody avoid repeat freeze-thaw cycles.
CLONALITY:	Polyclonal
CONJUGATE:	Unconjugated

Additional Info

ALTERNATE NAMES:	C19orf47, DKFZp686P05129, FLJ36888,
ACCESSION NO.:	NP_849152
PROTEIN GI NO.:	30520322

OFFICIAL SYMBOL: C19orf47

GENE ID: 126526

Background

BACKGROUND: The function of the C19orf47 protein remains unknown.

REFERENCES: 1) Mehrle, A., Nucleic Acids Res. 34 (DATABASE ISSUE), D415-D418 (2006).

FOR RESEARCH USE ONLY

December 12, 2016